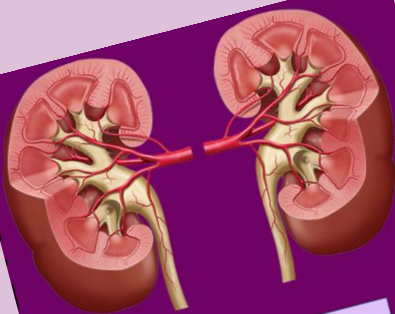


# Organ Donation Resource Booklet



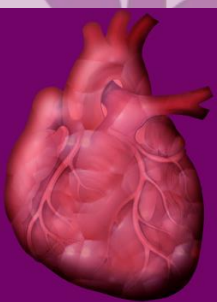
**Kidneys**



The kidneys are bean shaped and are located on each side of your spine below the rib cage.



The kidneys remove extra water from blood and help keep chemical balance in the body.



**Heart**



Your heart is roughly the size of a fist and sits in the middle of your chest, slightly to the left.



It's the muscle at the centre of your circulation system, pumping blood around your body as your heart beats.

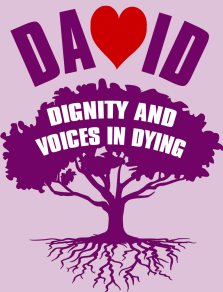


**Lungs**



The lungs are a pair of spongy, air-filled organs located on either side of the chest.

They work with the heart to transport oxygen from the air we breathe into the blood stream, around the body.



# Printing This Booklet



We recommend that if you are printing out this booklet, you print it out double-sided and in colour.



You may also want to print the booklet out onto card to make the resources for the activities last longer.



If this is not possible you can print in black and white, then colour in the game pieces and stick the two sides of each piece together.



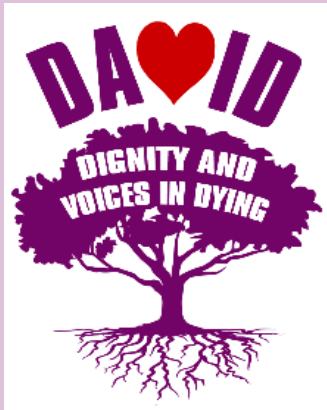
You can also find the resources on our website.

[www.peoplefirstmerseyside.co.uk](http://www.peoplefirstmerseyside.co.uk)

# Introduction



Hello and thank you for picking up this booklet!

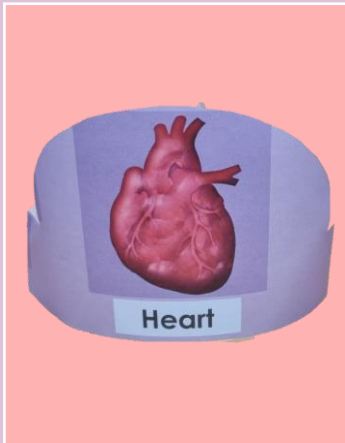


This resource booklet was made by people with learning disabilities and autism on the DAVID Project.



This booklet has the resources you need to play the fun games based around organ donation you will find in **The Organ Donation Activity Booklet**.

# What is in this booklet?



**Headband  
Game**

Page

**5**



**Bucket  
Game**

Page

**23**

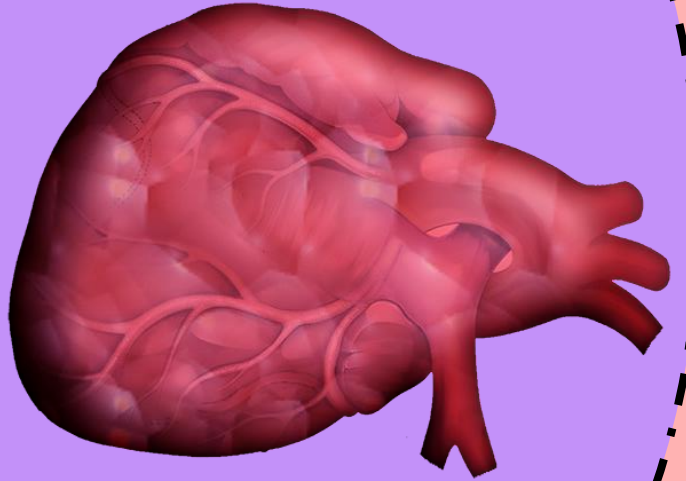


**Pairs Game**

Page

**27**

B



Heart

A

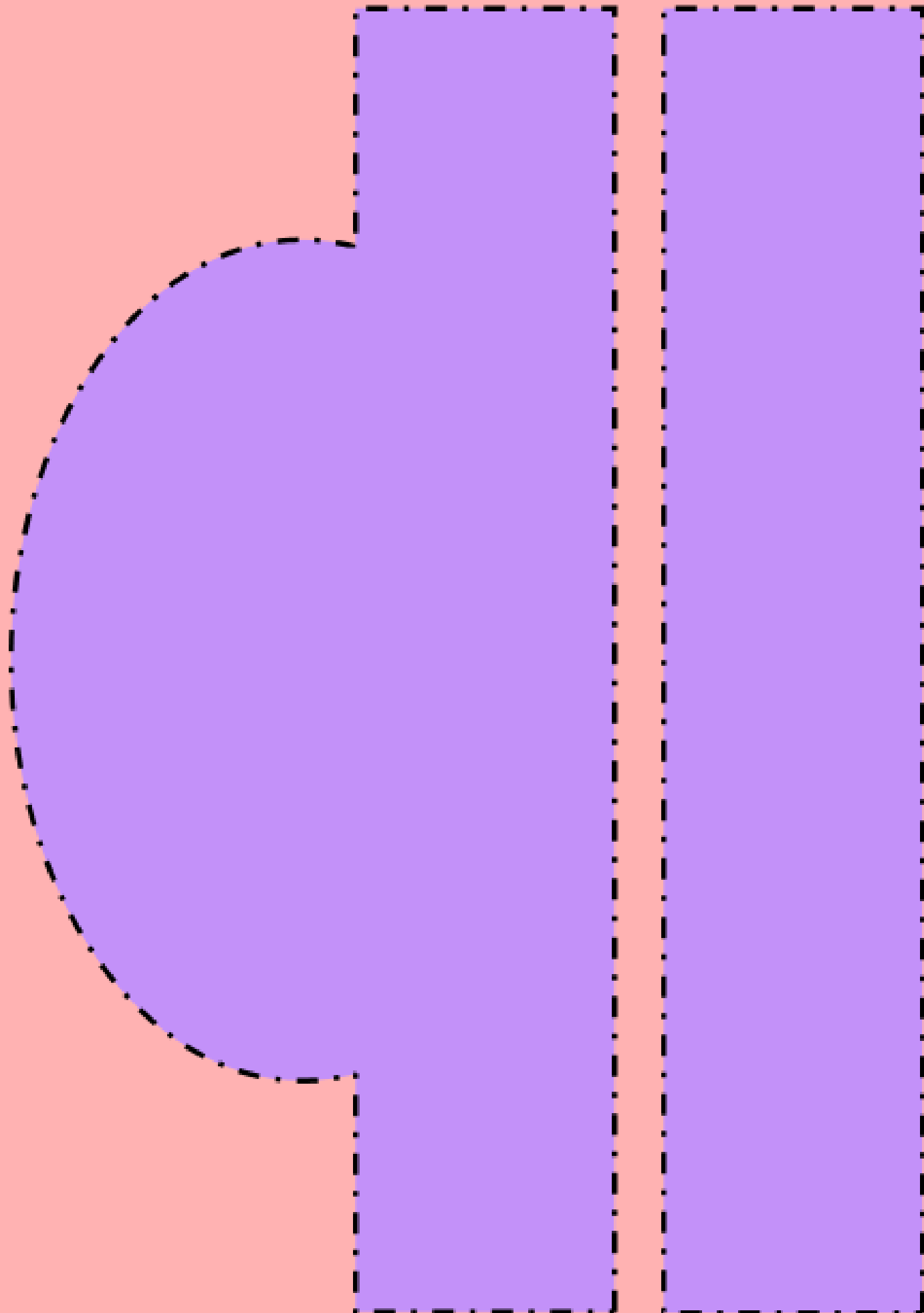


A

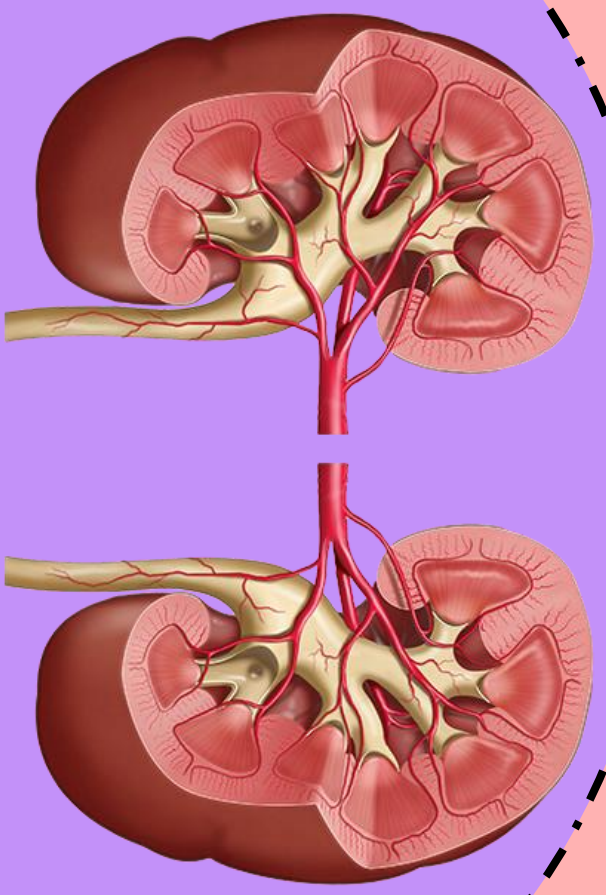


B









**B**



# Kidneys

**A**

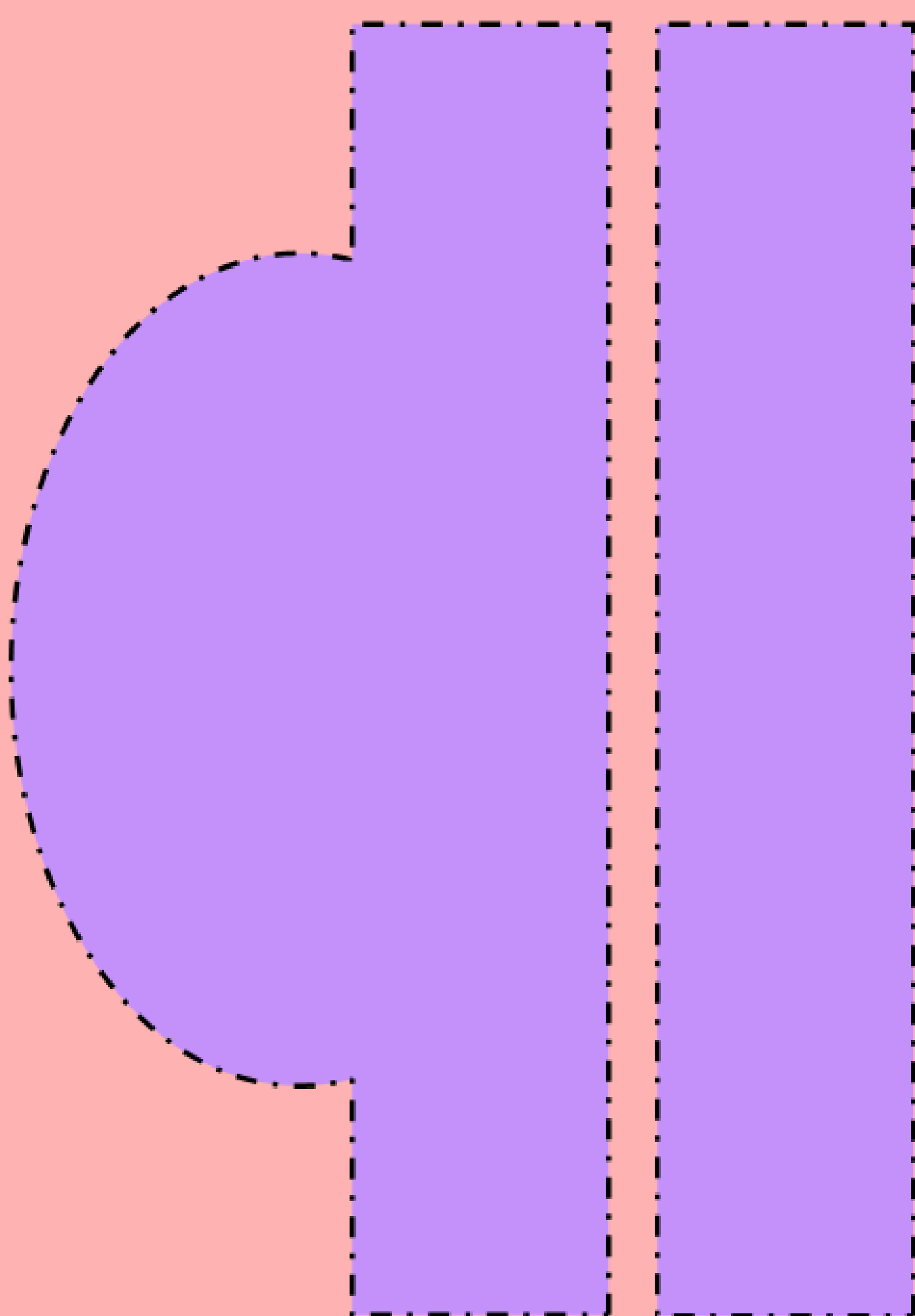


**A**



**B**





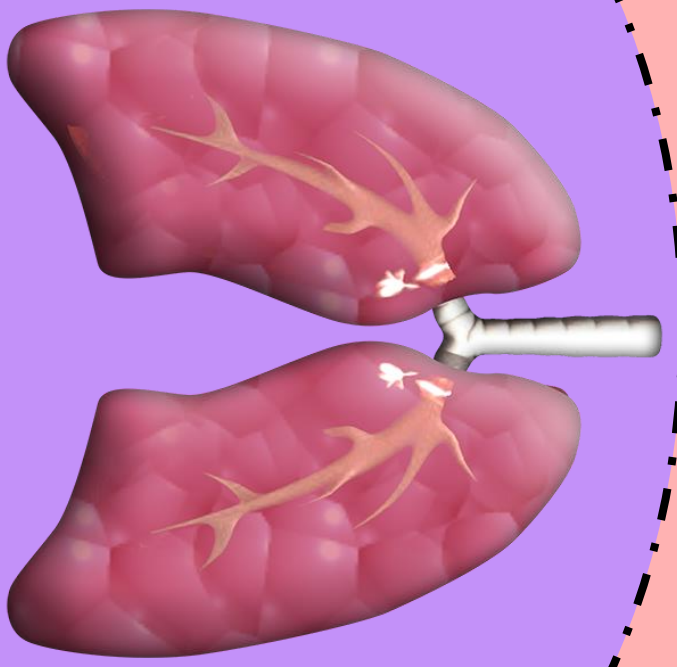




B



Lungs



A

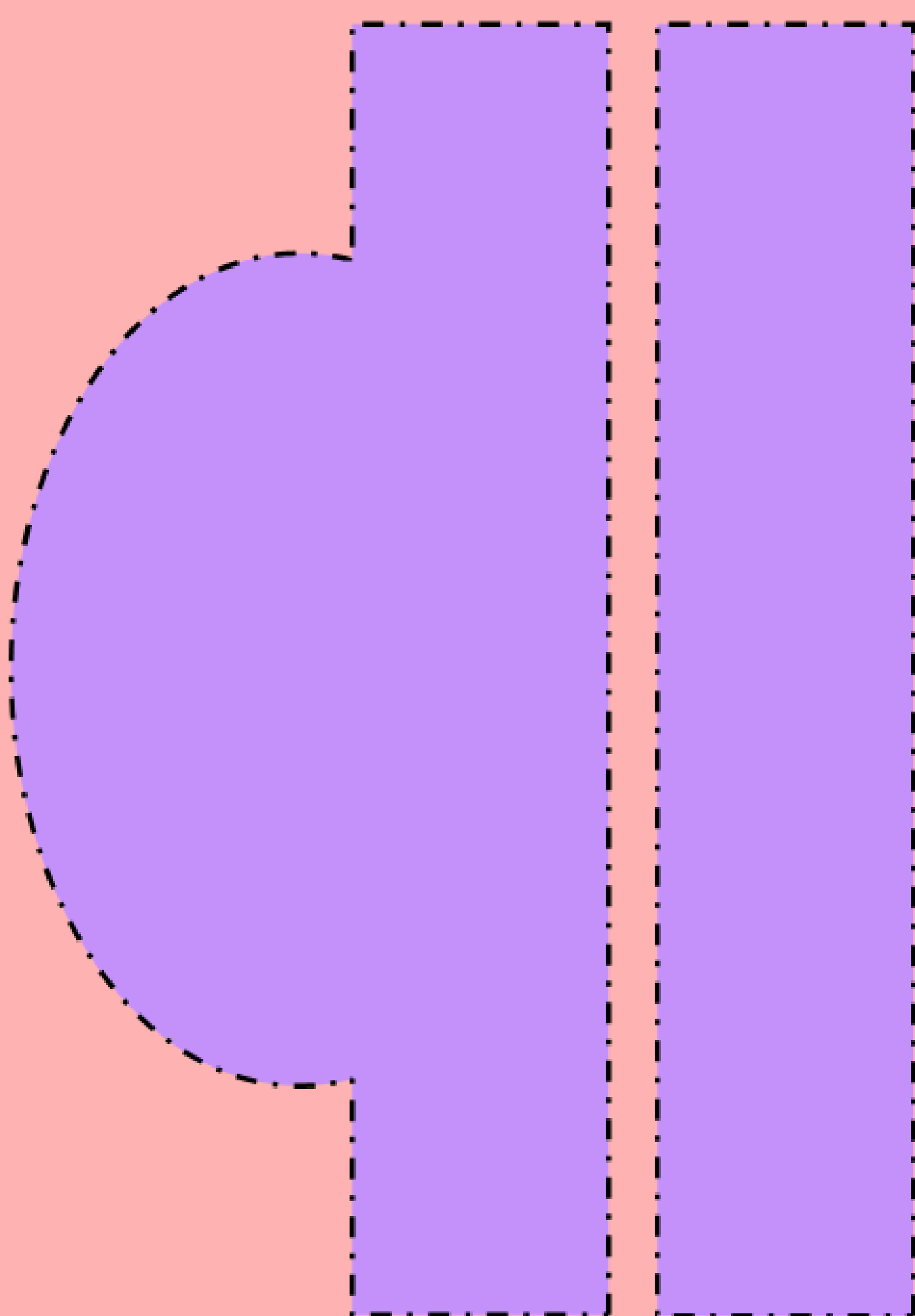


A



B





B



Liver

A

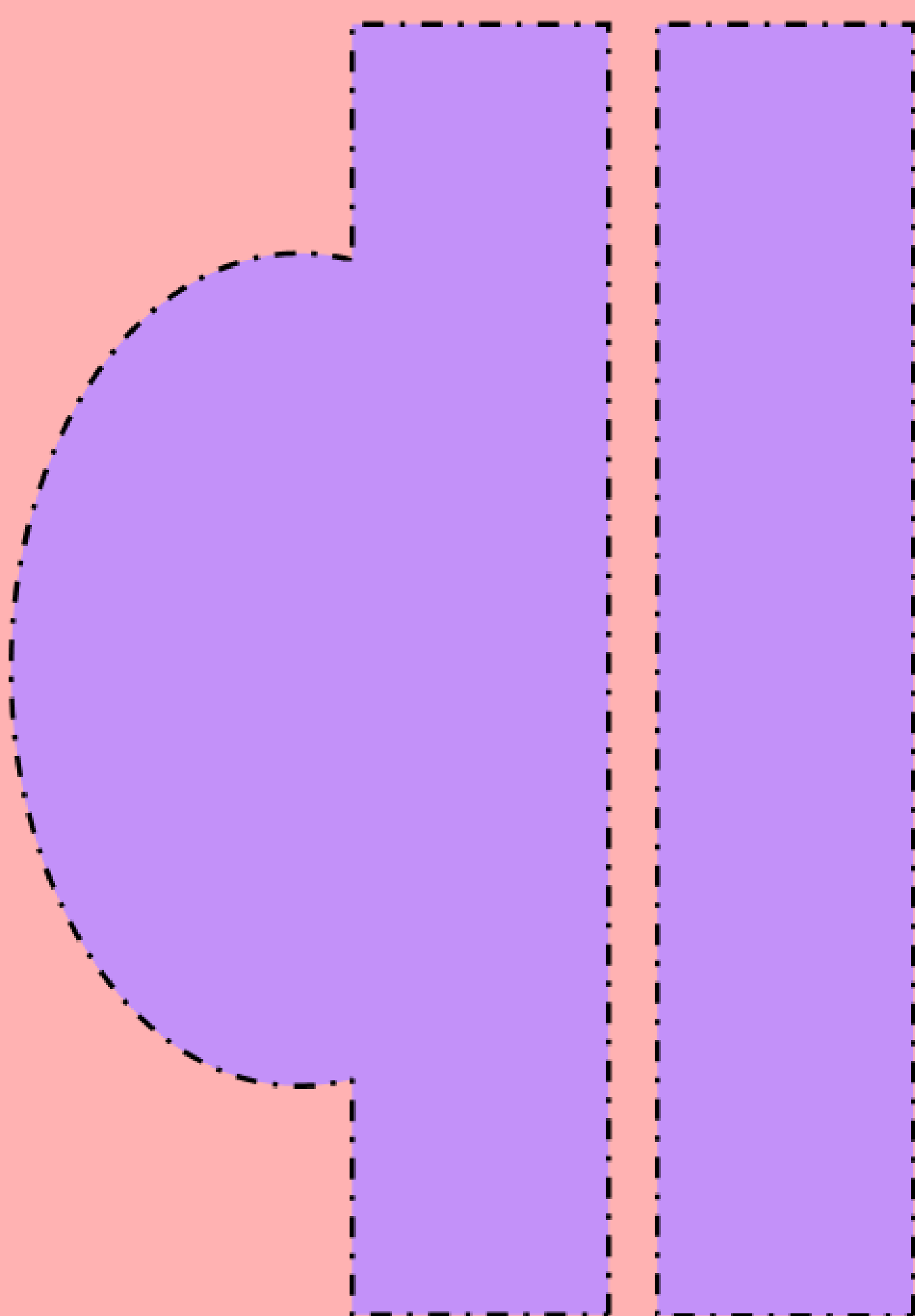


A

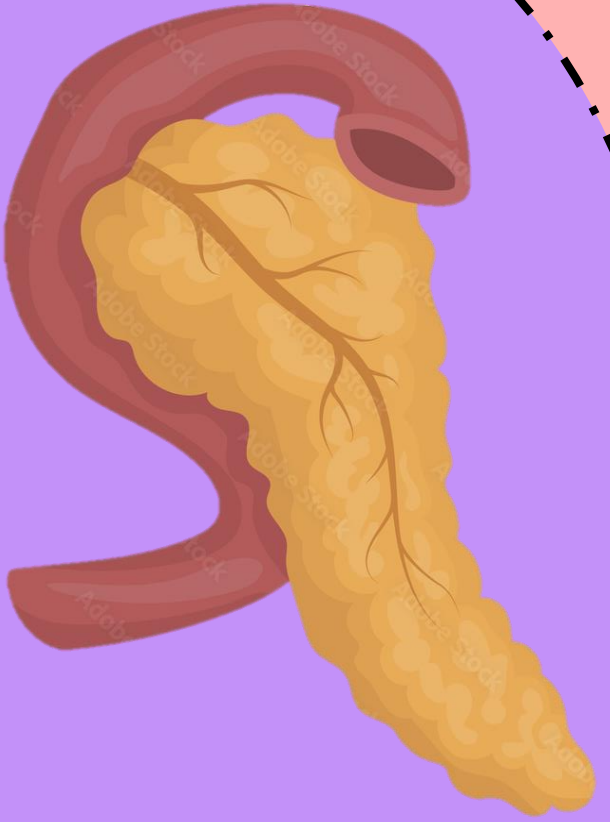


B





B



# Pancreas

A

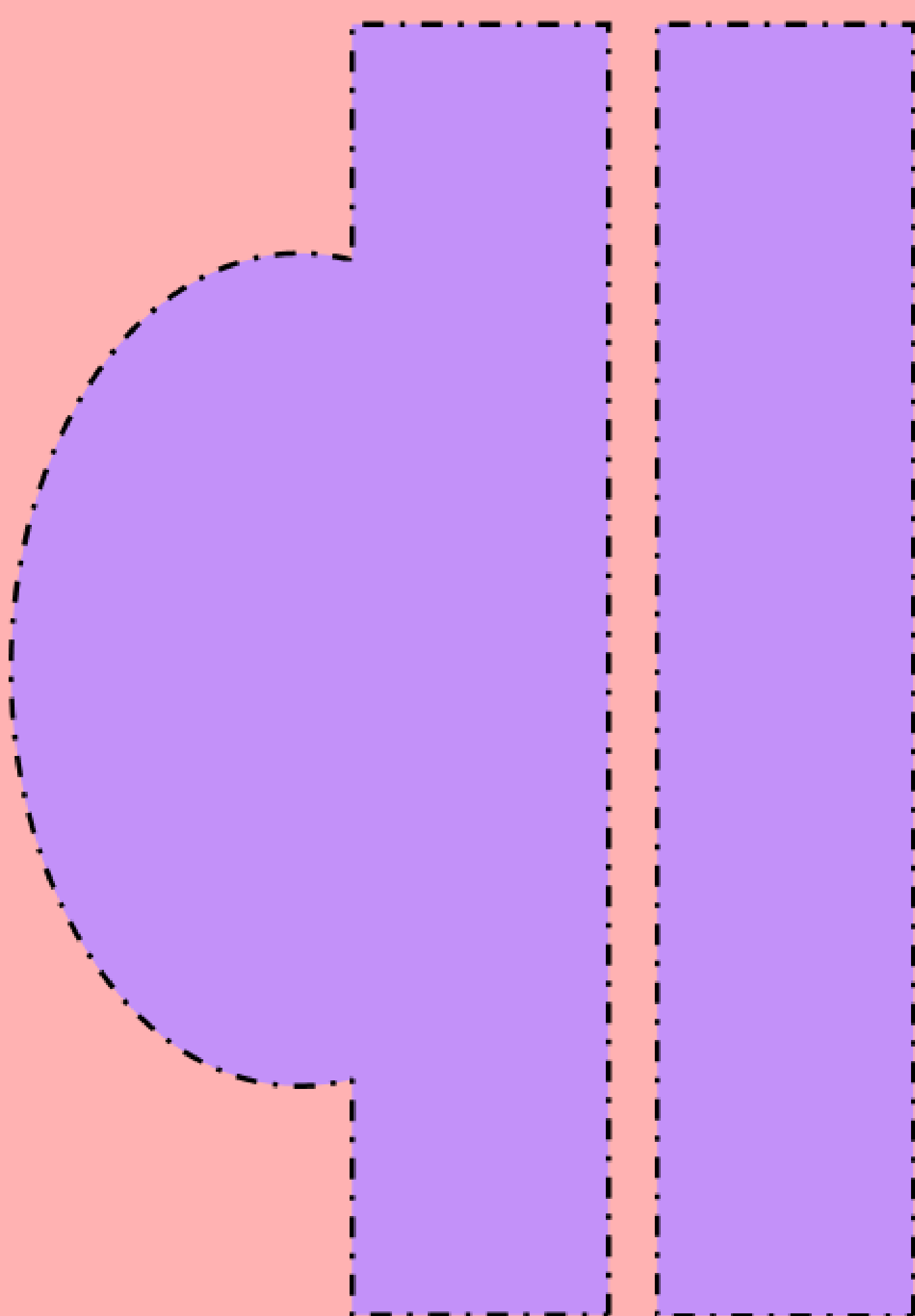


A



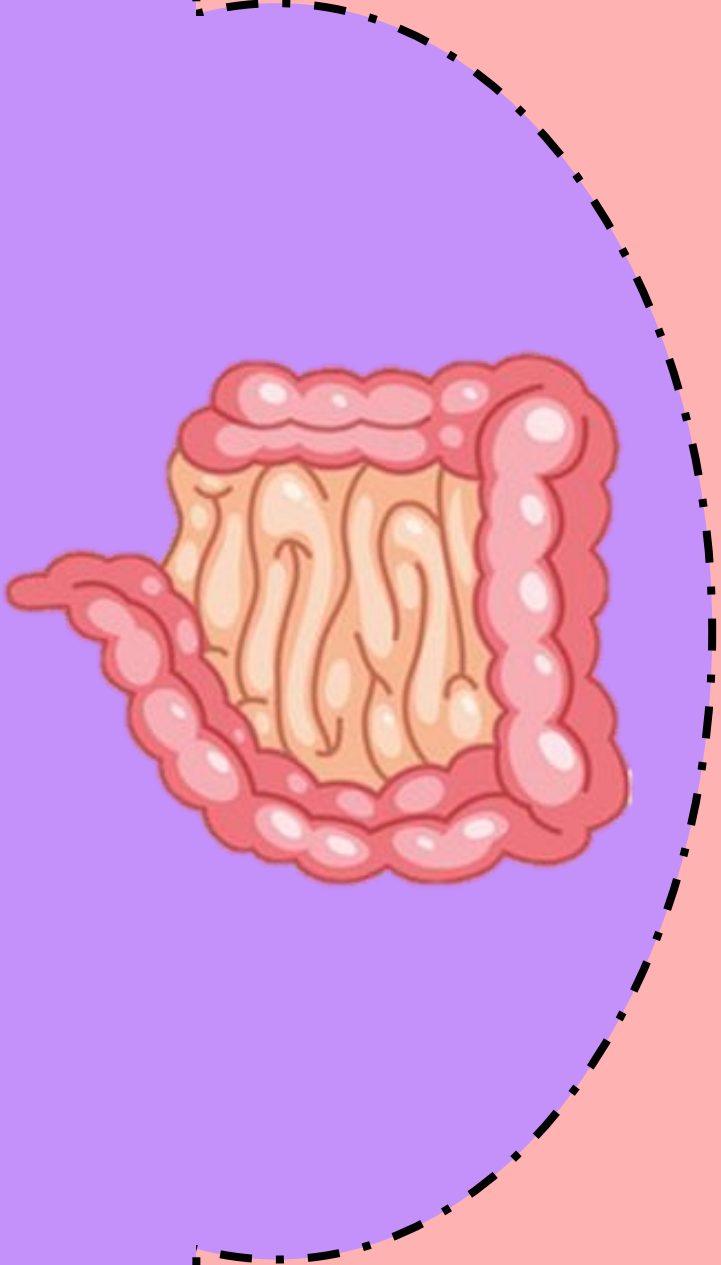
B







B



Small Bowel

A

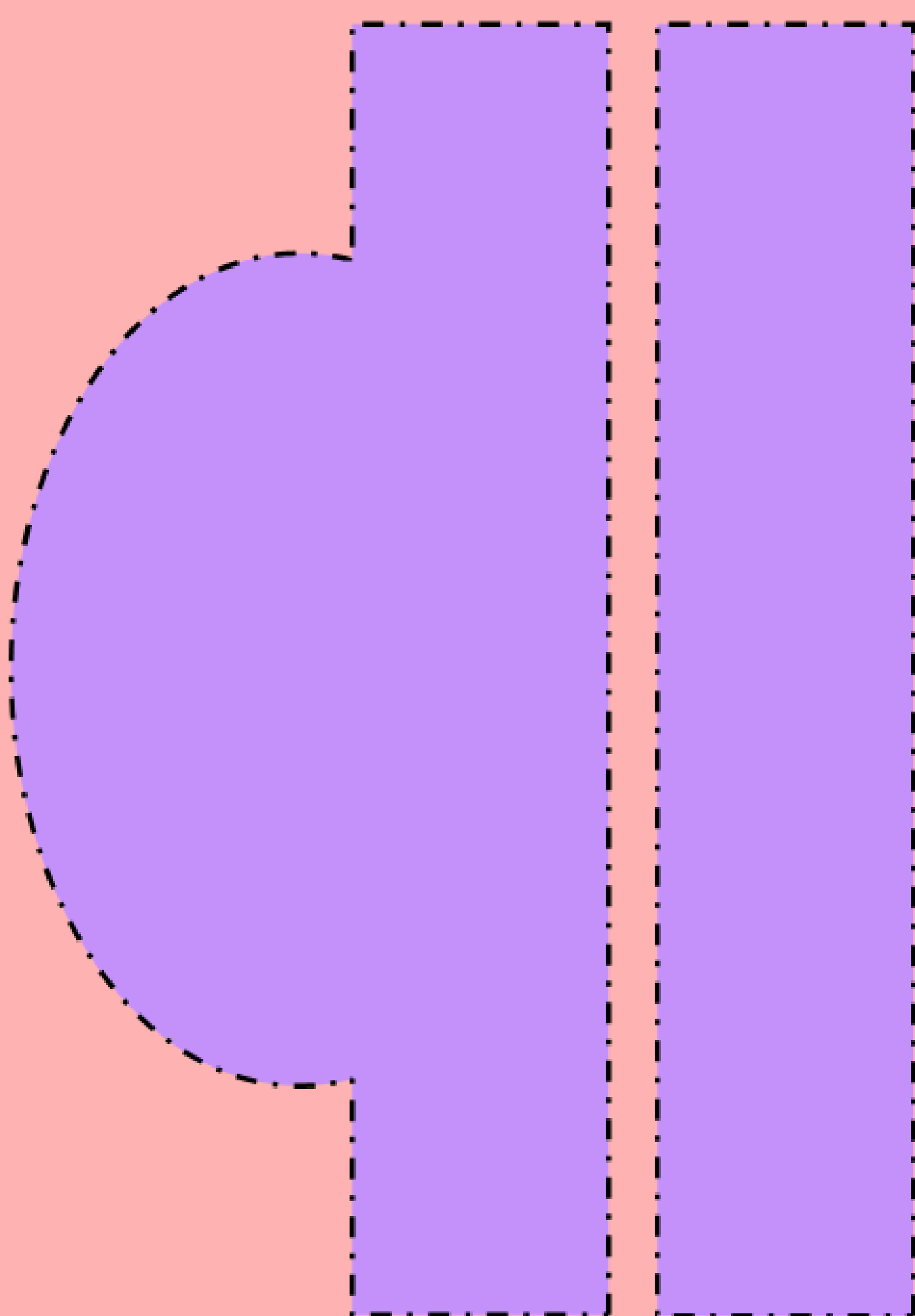


A



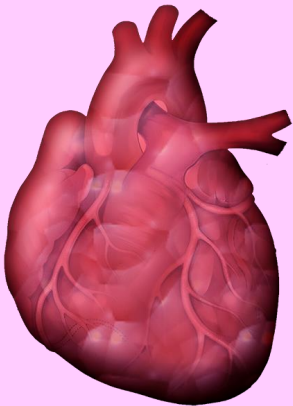
B



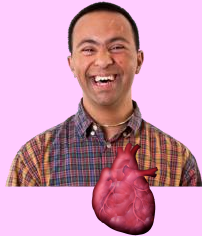


# Headband Game Clues

## Heart



### 3 Key Facts:



1. It is located in the middle of your chest and is about the size of your fist.

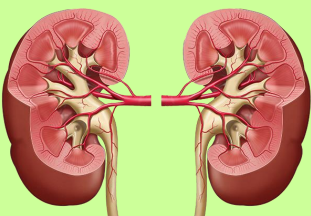


2. As it beats, it pumps blood all around your body.



3. A doctor can use a stethoscope to listen to it beating.

## Kidneys



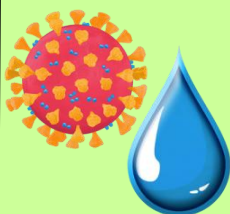
### 3 Key Facts:



1. They are bean shaped and approximately the size of a computer mouse.

2

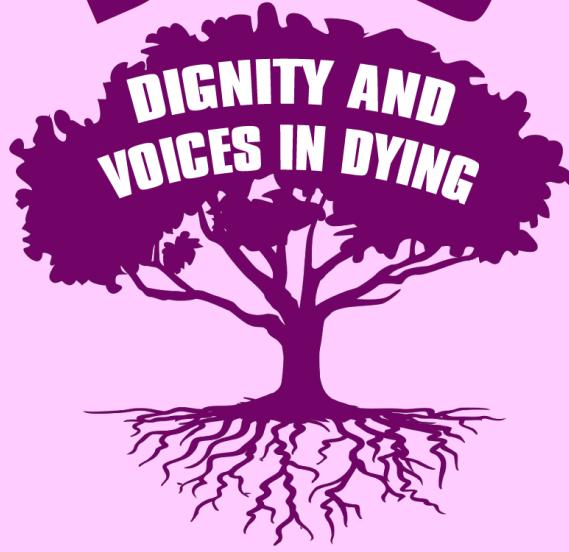
2. Most people are born with 2.



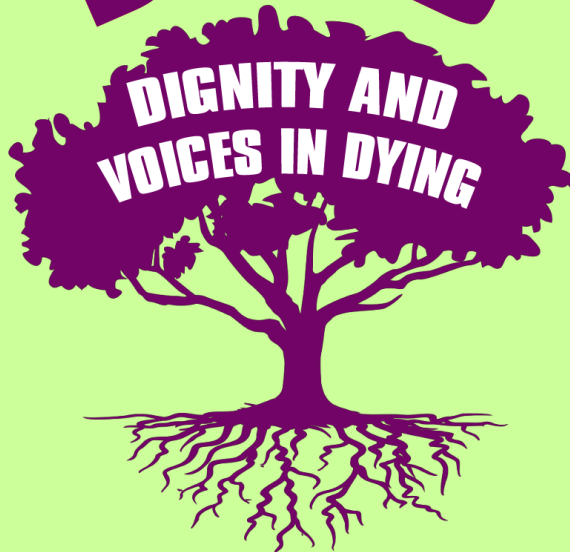
3. They remove waste and extra water from your blood.

Headband Game Clues

DAVID

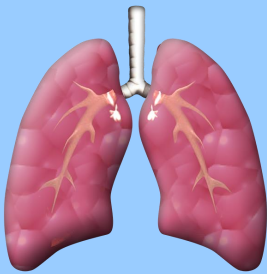


DAVID

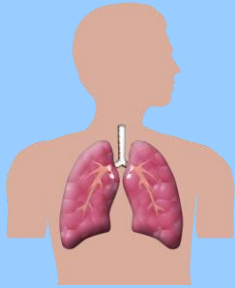


# Headband Game Clues

## Lungs



### 3 Key Facts:

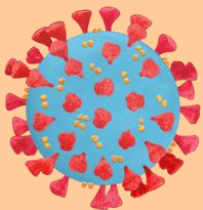


2



1. They are located in the chest, behind the rib cage.
2. Most people are born with 2.
3. They are responsible for breathing.

## Liver

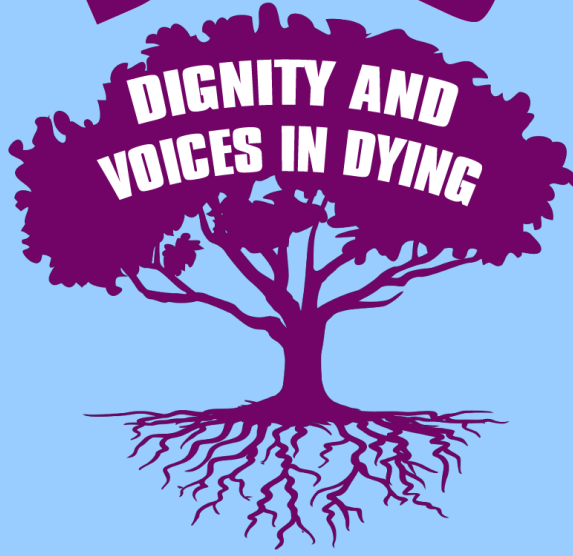


### 3 Key Facts:

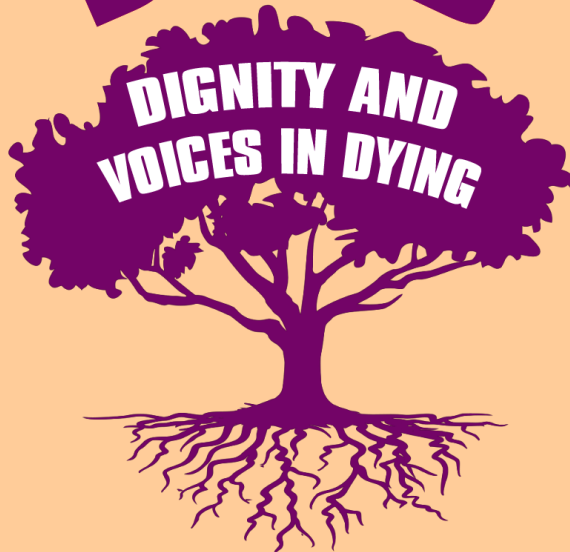
1. It is located in the upper-right portion of the abdominal cavity.
2. This protects your body from toxins (harmful substances).
3. It breaks down medicines into a form that the body can use.

Headband Game Clues

DAVID



DAVID



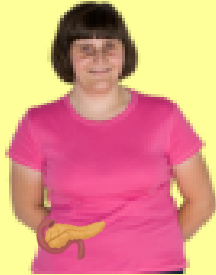


# Headband Game Clues

## Pancreas



### 3 Key Facts:



1. It lies underneath the stomach.

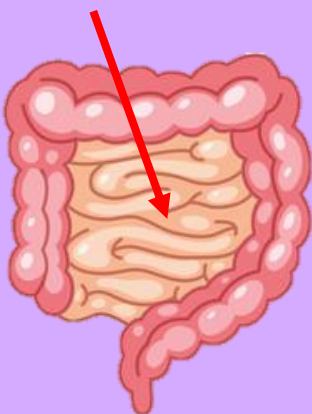


2. It releases insulin into the blood sugar in order to control blood sugar levels.

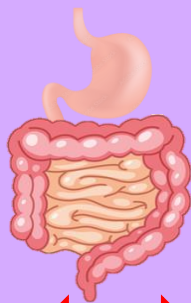


3. When it does not produce enough insulin, it can cause diabetes.

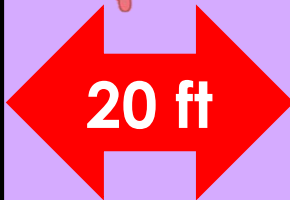
## Small Bowel



### 3 Key Facts:



1. This is a digestive tube connecting the stomach to the large intestine.



2. If it is stretched, it is about 20 foot long.



3. It absorbs nutrients from the food we eat.



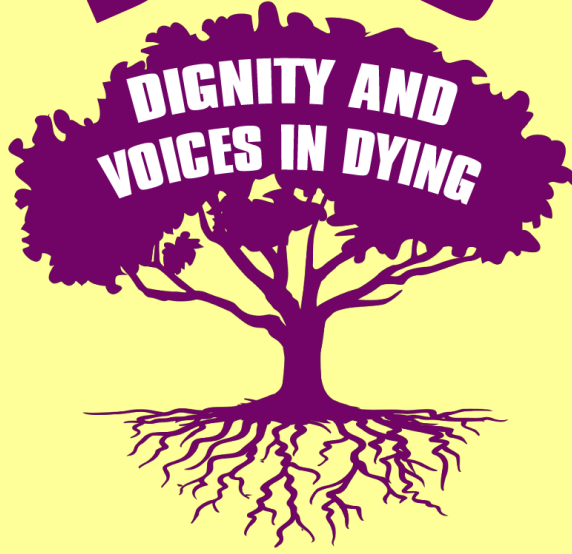
# Headband Game Clues



**DAVID**



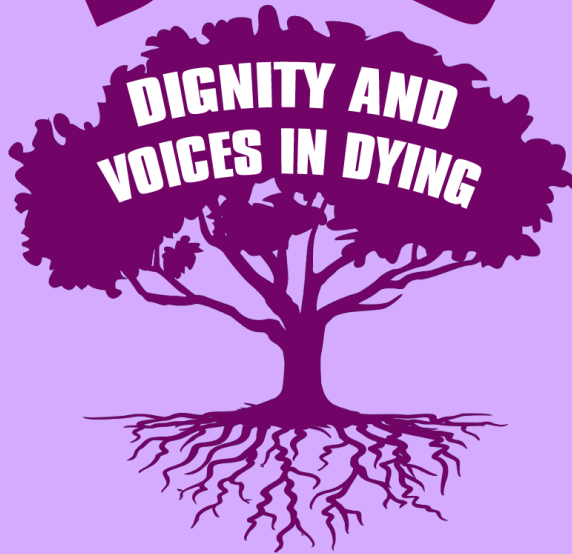
**DIGNITY AND  
VOICES IN DYING**



**DAVID**



**DIGNITY AND  
VOICES IN DYING**





# Bucket Game Cards



**1.** How can you register your decision about organ donation?



**1.** Name 3 of the 6 organs that can be donated after death.

1 \_\_\_\_\_  
2 \_\_\_\_\_  
3 \_\_\_\_\_



**2.** Name a tissue that can be donated after death.



**2.** How old do you have to be to make your own decision about organ donation?

**3.** When did the 'opt out' system start in England?



**3.** What organs can you donate as a living donor?



**1.** What is a living donor?

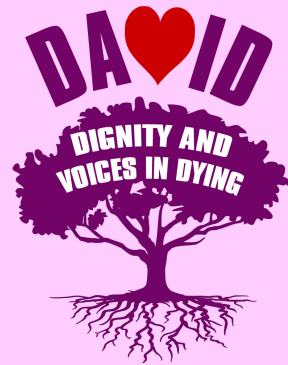
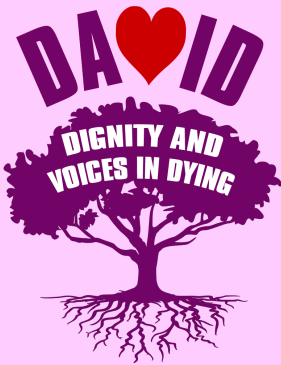
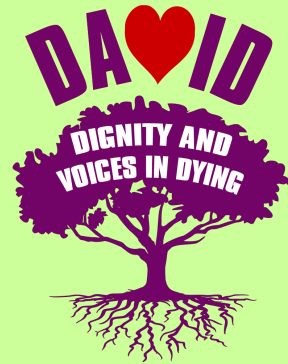
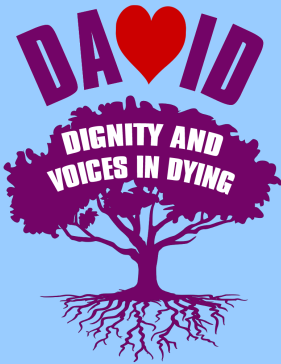
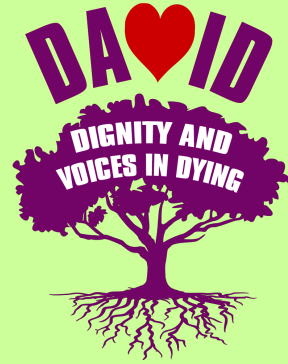
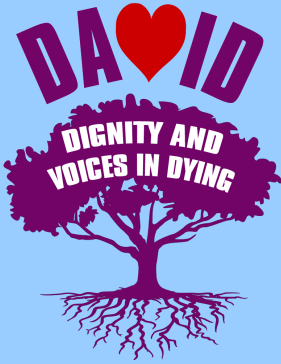
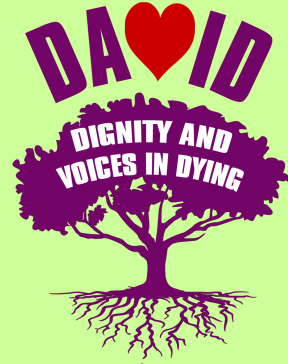
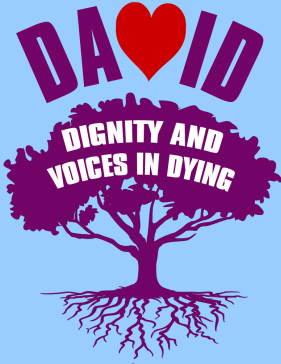


**2.** Can anyone else make the decision about organ donation for you?





# Bucket Game Cards





# Bucket Game Cards

1. What is the NHS Organ Donor Register?



3. Organ donation in England is now an 'opt out' system. What does that mean?

2. At what age can someone be an organ donor?



1. What does the Jewish faith teach about organ donation?



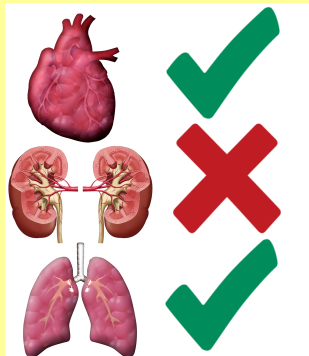
3. Can you change your decision after you have registered to be a donor?



2. Will your family be asked about organ donation when you die?



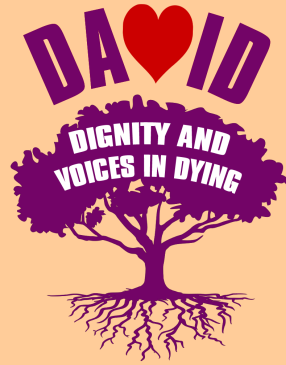
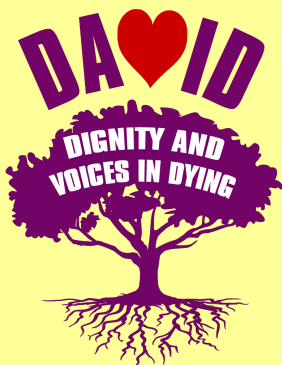
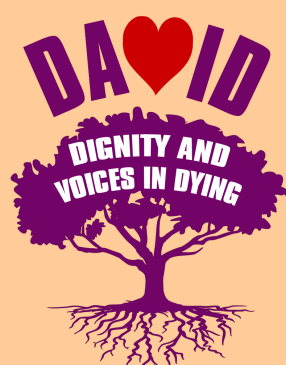
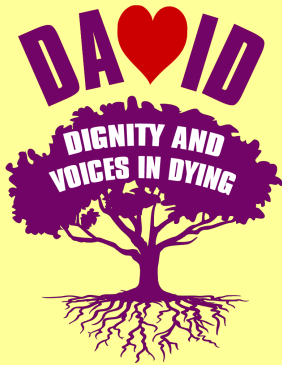
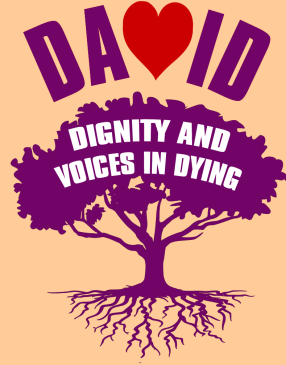
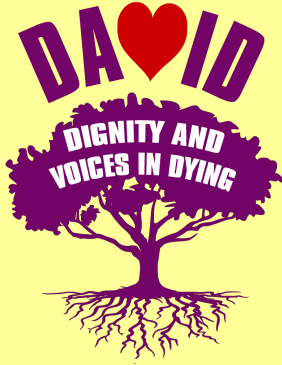
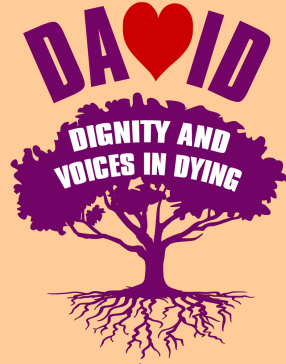
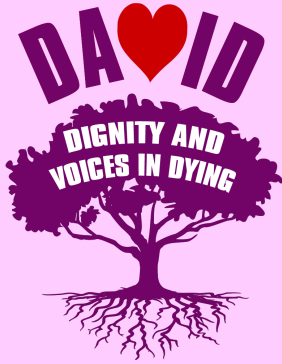
4. How many lives can an organ donor save after death?



3. Can you select which organs to donate?

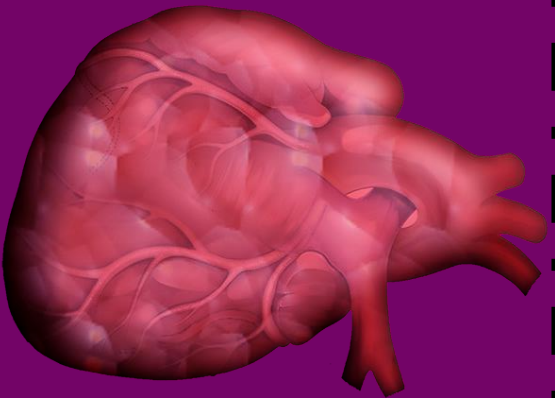


# Bucket Game Cards

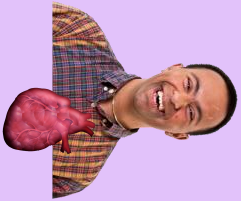




# Pairs Game Cards



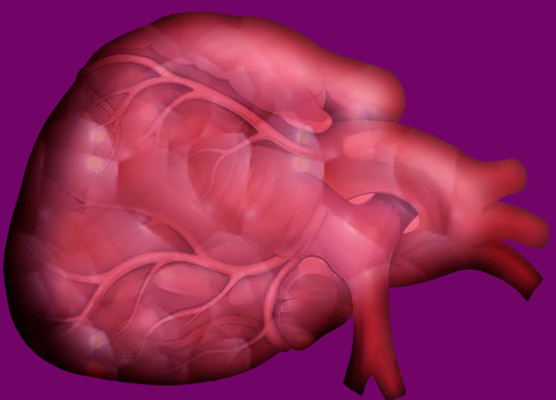
**Heart**



Your heart is roughly the size of a fist and sits in the middle of your chest, slightly to the left.



It's the muscle at the centre of your circulation system, pumping blood around your body as your heart beats.



**Heart**



Your heart is roughly the size of a fist and sits in the middle of your chest, slightly to the left.



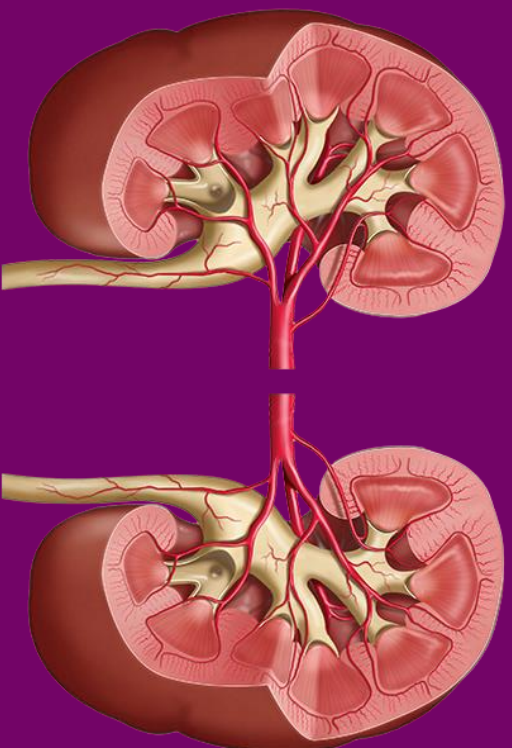
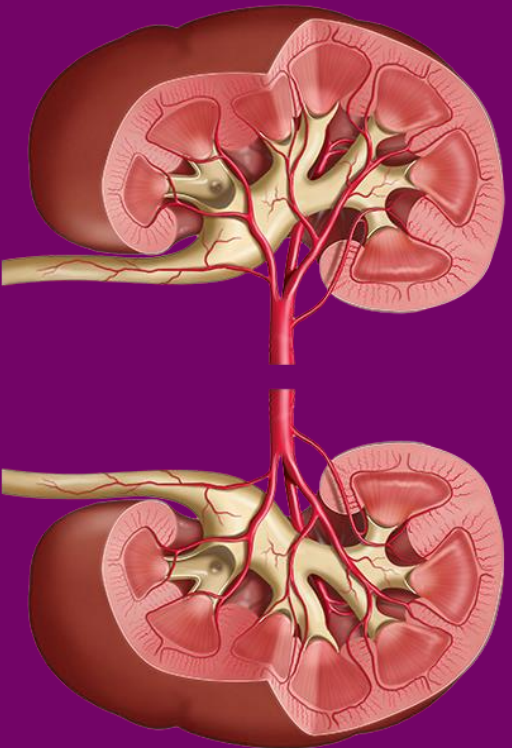
It's the muscle at the centre of your circulation system, pumping blood around your body as your heart beats.



# Pairs Game Cards



# Pairs Game Cards



## Kidneys

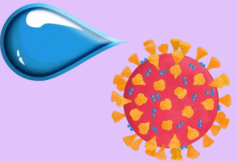
## Kidneys



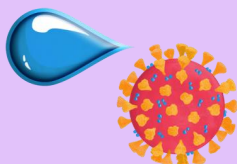
The kidneys are bean shaped and are located each side of your spine, just below the rib cage.



The kidneys are bean shaped and are located each side of your spine, just below the rib cage.



The kidneys remove waste and extra water from the blood and help keep chemicals balanced in the body.



The kidneys remove waste and extra water from the blood and help keep chemicals balanced in the body.

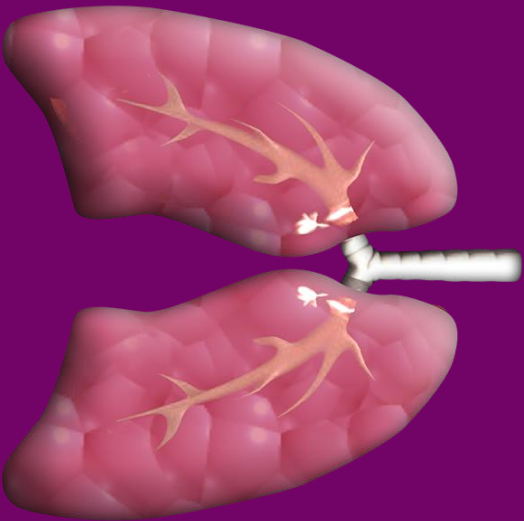




# Pairs Game Cards



# Pairs Game Cards



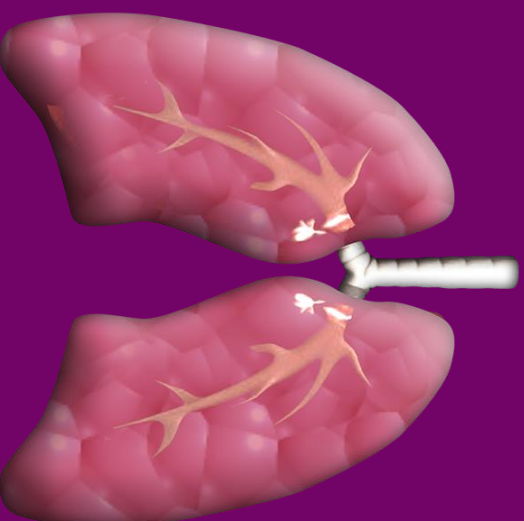
## Lungs



The lungs are a pair of spongy, air-filled organs located on either side of the chest.



They work with the heart to transport oxygen from the air we breath into the blood stream, around the body.



## Lungs



The lungs are a pair of spongy, air-filled organs located on either side of the chest.



They work with the heart to transport oxygen from the air we breath into the blood stream, around the body.

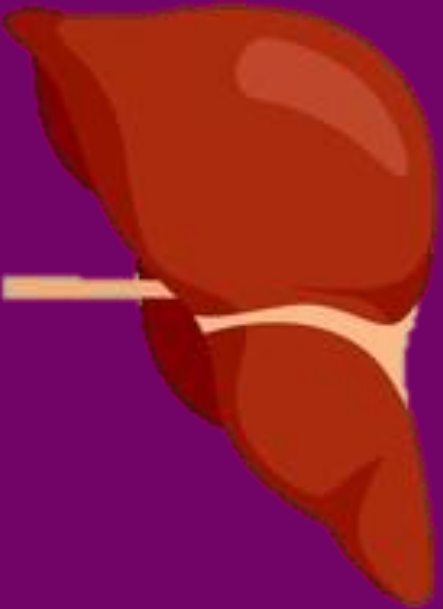


# Pairs Game Cards



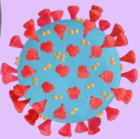


# Pairs Game Cards



**Liver**

The liver is shaped like a cone and is located in the upper right-hand portion of the abdominal cavity.

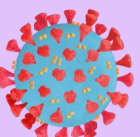


It protects the body from toxins and breaks down medicines into a form that the body can use.



**Liver**

The liver is shaped like a cone and is located in the upper right-hand portion of the abdominal cavity.



It protects the body from toxins and breaks down medicines into a form that the body can use.



# Pairs Game Cards



# Pairs Game Cards



## Pancreas



Your pancreas is located inside your abdomen, just behind your stomach. It's about the size of your hand.



It releases insulin into the blood to control blood sugar levels.



## Pancreas



Your pancreas is located inside your abdomen, just behind your stomach. It's about the size of your hand.



It releases insulin into the blood to control blood sugar levels.

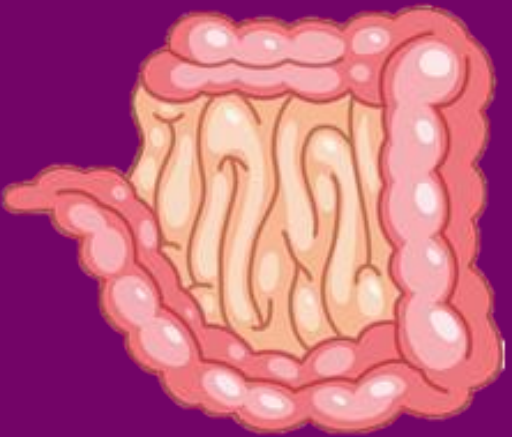


# Pairs Game Cards





# Pairs Game Cards

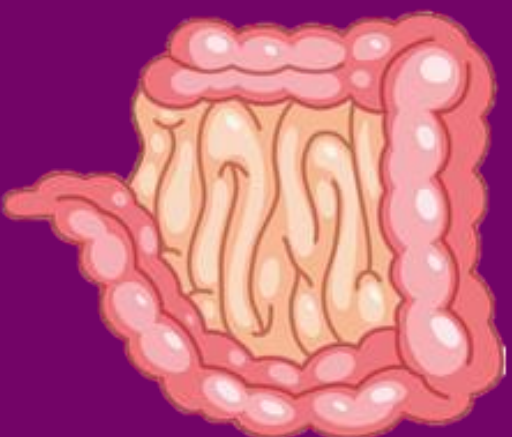


## Small Bowel

The small bowel is a long tube-like organ that connects the stomach and the large intestine.



90% of the food we eat passes through this. As the food passes through, the small bowel absorbs all the nutrients needed to keep the body healthy.



## Small Bowel

The small bowel is a long tube-like organ that connects the stomach and the large intestine.



90% of the food we eat passes through this. As the food passes through, the small bowel absorbs all the nutrients needed to keep the body healthy.





# Pairs Game Cards







# If you want to find out more contact People First Merseyside



To find out what other resources we have, look on our website or give us a call:

[www.peoplefirstmerseyside.co.uk](http://www.peoplefirstmerseyside.co.uk)

0151 329 2137

